

Cardax FT Feature Information

Intercom High Level Interface

The Cardax FT Intercom High Level Interface (HLI) feature enables digital intercom systems such as the Jacques TCP/IP Intercom System to be integrated into the Cardax FT system.

Cardax FT Intercom HLI enables digital intercom systems to be integrated into the Cardax FT system. This allows intercom functionality and related intercom alarms and events to be supported through the Cardax FT graphical user interface by Cardax FT operators.

Multiple Intercom Systems

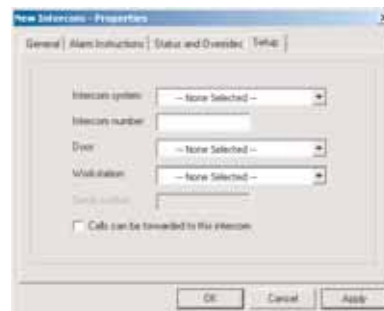
Multiple intercom systems can be supported in the Cardax FT system. For each intercom system, individual intercom units are uniquely identified. Cardax FT becomes the user interface to control calls for the intercom system. The audio communications remain within the originating intercom system.

Intercom Functionality

Intercom units may be associated with access controlled doors, enabling authorised operators to open that door in response to a call made from the intercom unit. An intercom master can be associated with a computer running Cardax FT Command Centre, for the operator to use to respond to calls and monitor the status of the intercom system.

In addition to answering calls, Cardax FT operators with intercom operator privileges also have options to:

- Forward a call to another Cardax FT workstation or intercom unit from the same intercom system
- Place a call on hold, enabling the operator to service other calls and return to the call when ready
- End a call
- Initiate calls.



System Division

Just like other items created in Cardax FT Command Centre, intercom systems and intercoms are assigned to a division when configured. This allows only authorised operators assigned to that division to access intercoms and intercom systems in that division.

'Remote Mode'

In response to fluctuations in workload and operator requirements, the Cardax FT workstation intercom can be put into 'remote mode'. Calls continue to be logged in the Cardax FT system but are queued and diverted to an alternative intercom answering workstation. The alternate workstation must be in the same or higher division.

Where 'remote mode' is supported by the third party intercom system, it is possible to configure the workstation to switch to 'remote mode' when the operator logs off their Cardax FT workstation.



Audit Trail

All intercom events are recorded on the Cardax FT audit trail, including the operator who answered or initiated the call, the intercom unit, the call duration, the time the call was made and answered.

As at July 2006, Cardax FT supports integration with the Jacques TCP/IP Intercom System. Please contact Gallagher Security Management Systems if integration with an alternative intercom system is required.



www.gallaghersms.com

Gallagher Security Management Systems

Kahikatea Drive
Private Bag 3026
Hamilton
New Zealand
Phone: +64-7-838 9800
Fax: +64-7-838 9801
Email: cdxsales@cardax.com

Offices / Distributors are located in:

Asia
Australia
Europe
Middle East
New Zealand
Russia
South Africa
United Kingdom
United States of America



Disclaimer

In accordance with the Gallagher policy of continuing development, designs and specifications are subject to change without notice. Gallagher Security Management Systems is a division of Gallagher Group Limited. Cardax is a registered trademark of Gallagher Group Limited. All other product, brand or trade names mentioned within are the property of their respective trademark owners. Copyright © Gallagher Group Limited 2006. All rights reserved.



610746-03/06